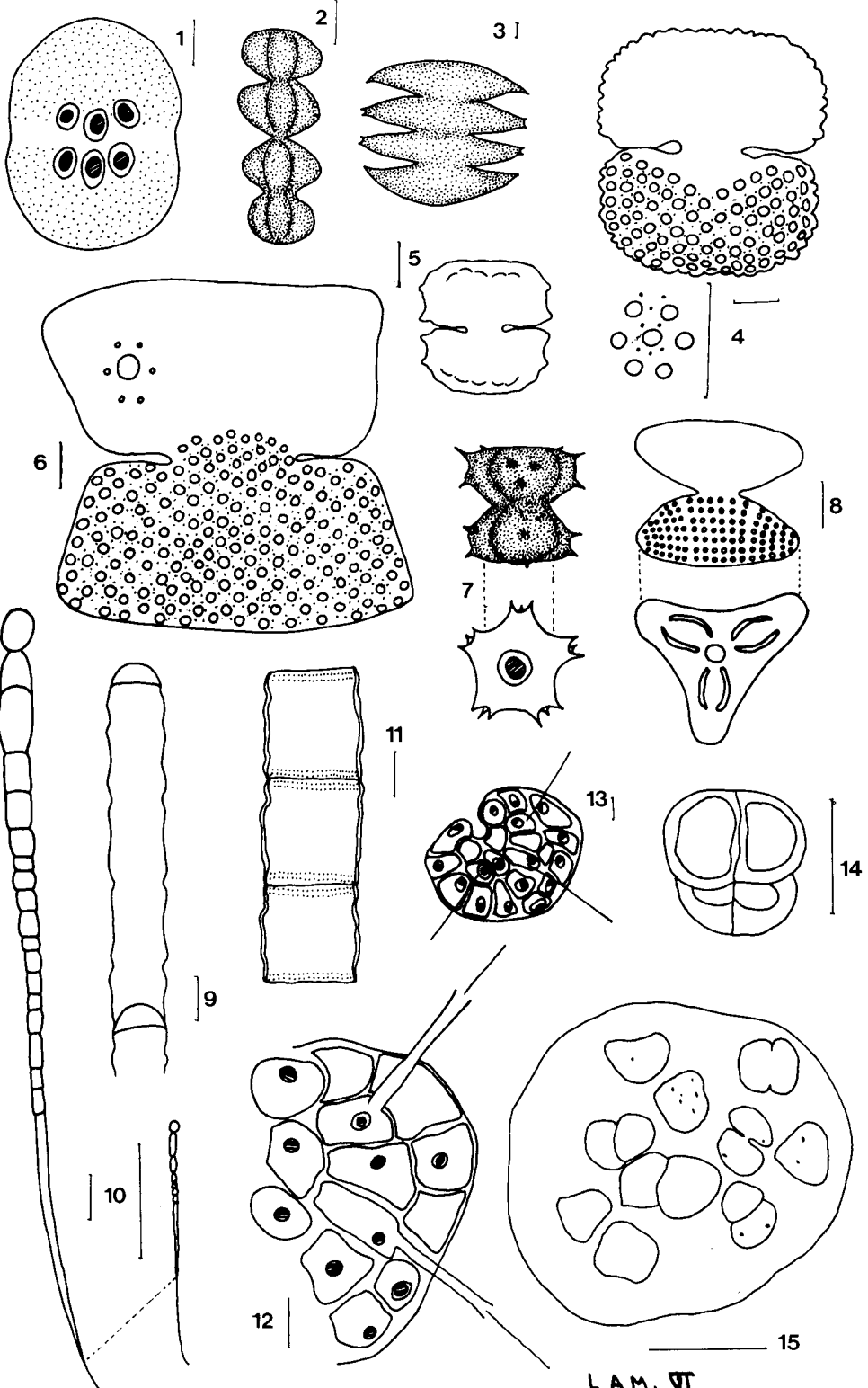


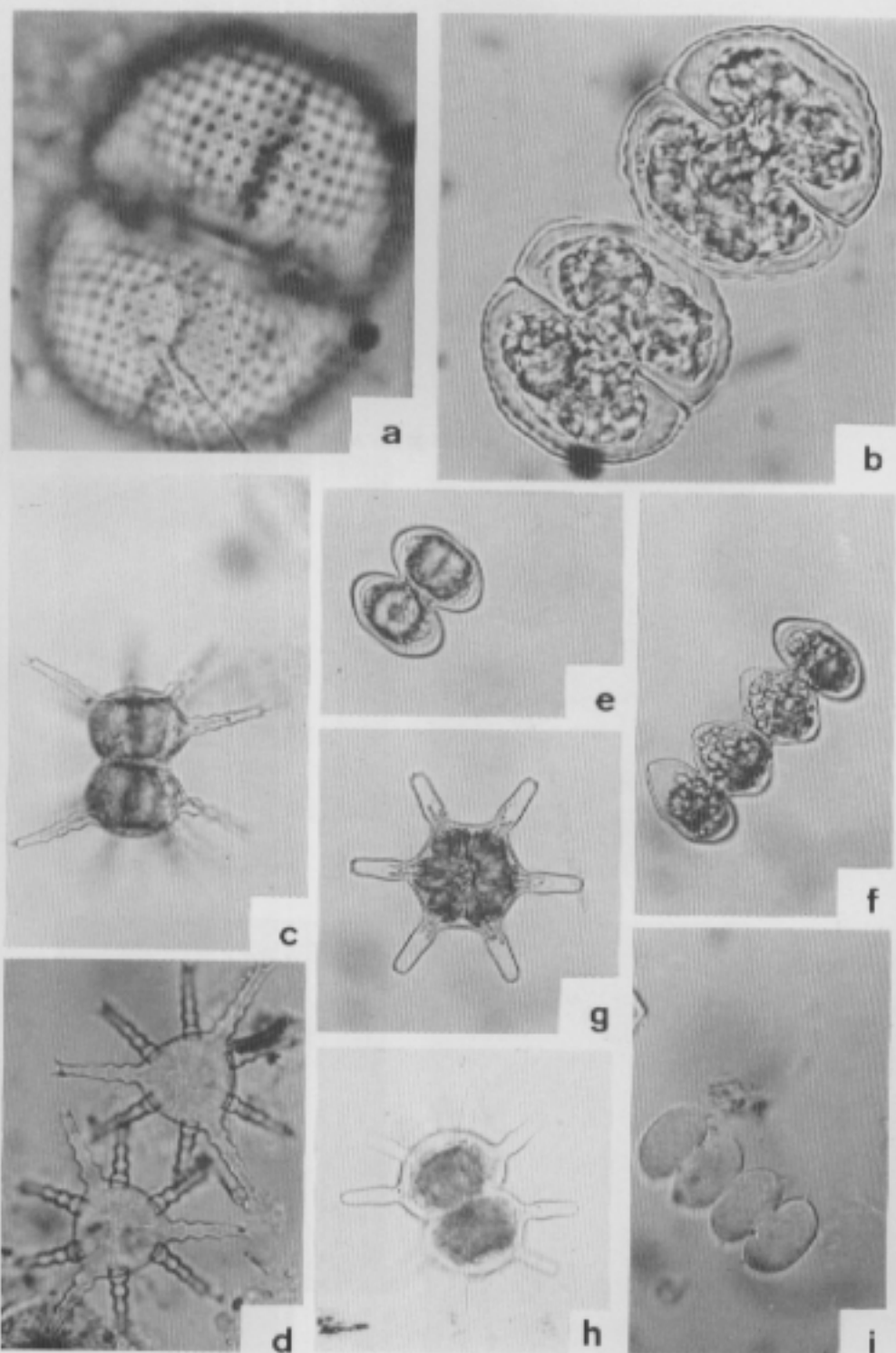
LAM. V.

L A M I N A VI

- 1 — *Cosmarium pseudoconnatum*
- 2 — *Spondylosium moniliforme*
- 3 — *Micrasteria laticeps*
- 4 — *C. margaritatum f. minor*
- 5 — *C. mayori*
- 6 — *C. quadrum var. sublatum*
- 7 — *St. quadrangulare var. contactum*
- 8 — *St. alternans*
- 9 — *Oedogonium sp.*
- 10 — *Rivularia aquatica*
- 11 — *Hyalotheca mucosa*
- 12 — *Coleochaete orbicularis*: Detalle a gran aumento
- 13 — " " dibujo completo
- 14 — *Chroococcus minutus*
- 15 — *Myxosarcina spectabilis*



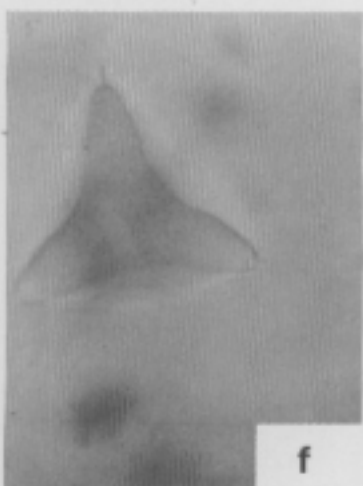
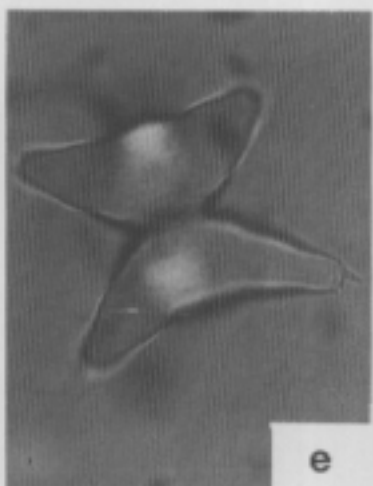
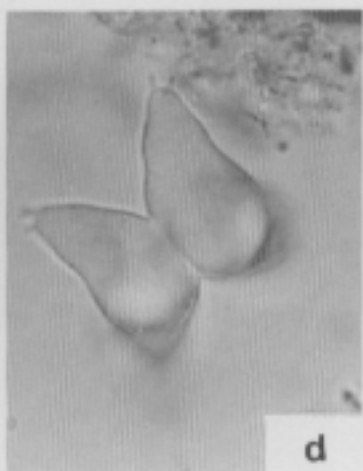
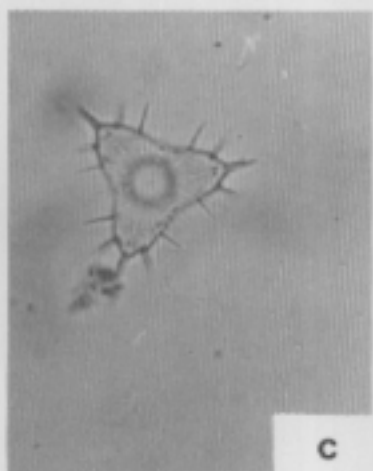
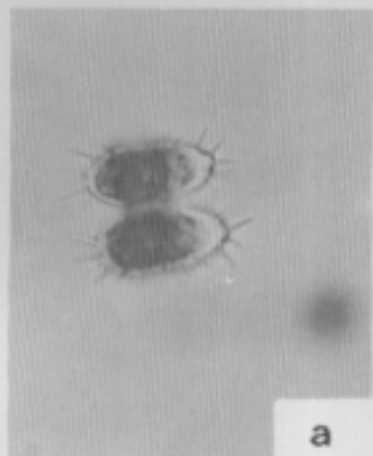
LAM. VI.



Lám. VII

L A M I N A V I I I

- fig. a,b — *St. setigerum* var. *subvillosum* en vista frontal
" c — " " en vista apical
" d,e — *St. botanense* en vista frontal
" f — " en vista apical



Lám.VIII